



Nantucket Memorial Airport

Operations FY2014 vs. FY2015

		CY 2014						CY 2015							
		JUL	AUG	SEP	OCT	NOV	DEC	JAN	FEB	MAR	APR	MAY	JUN	TOTAL	
Fy2014	ITINERANT	Air Carrier	215	222	118	48	2	0							605
		Air Taxi	11,049	11,470	7,638	6,015	4,577	5,080							45,829
		General Aviation	5,480	5,715	3,530	2,318	1,611	1,681							20,335
		Military	57	39	0	2	60	86							244
	TOTAL	Intinerant	16,801	17,446	11,337	8,444	6,250	6,847							67,125
LOCAL	TOTAL	Civil	4	24	0	19	26	14							87
		Military	0	0	0	0	0	0							0
	TOTAL	Local	5	24	0	19	26	14							88
	TOTAL	Operations	16,805	17,470	11,337	8,463	6,276	6,861							67,212
		% Change	2.10%	-1.64%	-13.92%	-16.90%	-16.68%	-2.54%							

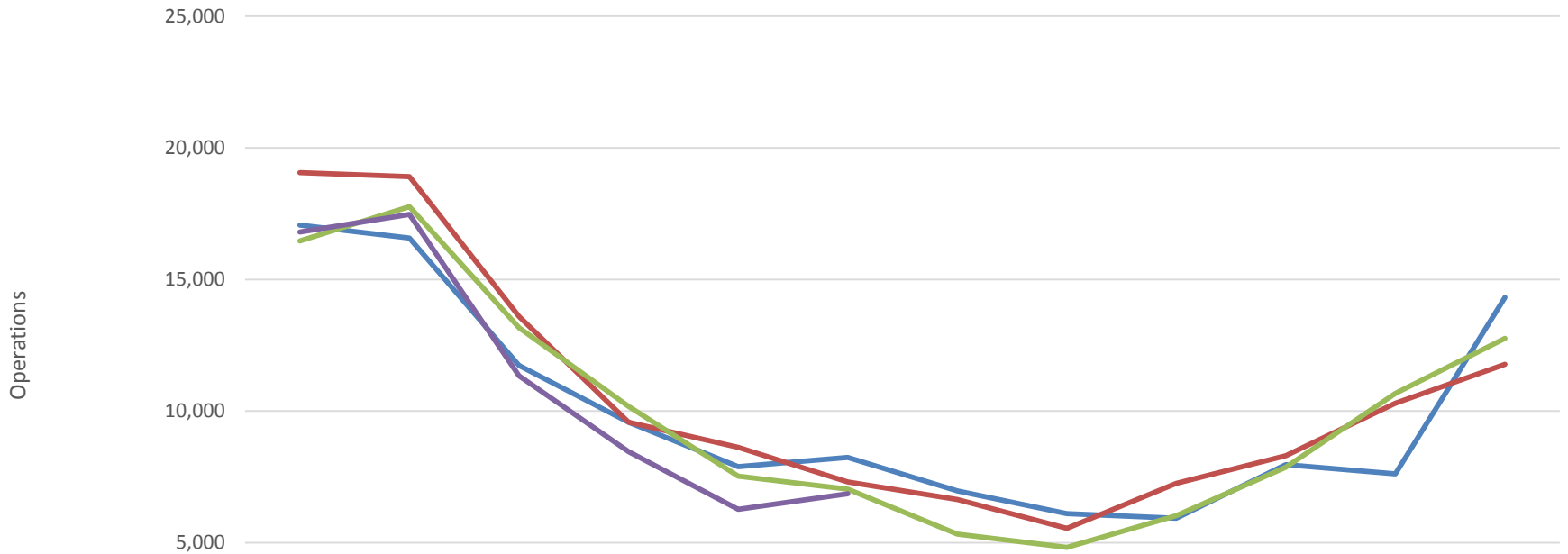
December 2013 vs. December 2014 down - 2.54%
YTD Down - 6.84%

	JUL	AUG	SEP	OCT	NOV	DEC	TOTAL	% Change
Operations FY2012	17,069	16,571	11,730	9,580	7,892	8,238	71,080	
Operations FY2013	19,062	18,899	13,589	9,581	8,624	7,309	77,064	8.42%
Operations FY2014	16,459	17,761	13,170	10,184	7,532	7,040	72,146	-6.38%
Operations FY2015	16,805	17,470	11,337	8,463	6,276	6,861	67,212	-6.84%



Nantucket Memorial Airport

Operations FY 2012-2015



	JUL	AUG	SEP	OCT	NOV	DEC	JAN	FEB	MAR	APR	MAY	JUN
Operations FY2012	17,069	16,571	11,730	9,580	7,892	8,238	6,966	6,103	5,928	7,966	7,618	14,315
Operations FY2013	19,062	18,899	13,589	9,581	8,624	7,309	6,645	5,546	7,257	8,305	10,302	11,779
Operations FY2014	16,459	17,761	13,170	10,184	7,532	7,040	5,329	4,821	6,031	7,870	10,675	12,767
Operations FY2015	16,805	17,470	11,337	8,463	6,276	6,861						